

Kiwiplan - Upgrade Shortcut Switches

These are placed on the shortcut of the upgrade.exe.

Upgrade Options Only (deprecated 7.80)

Evaluator:

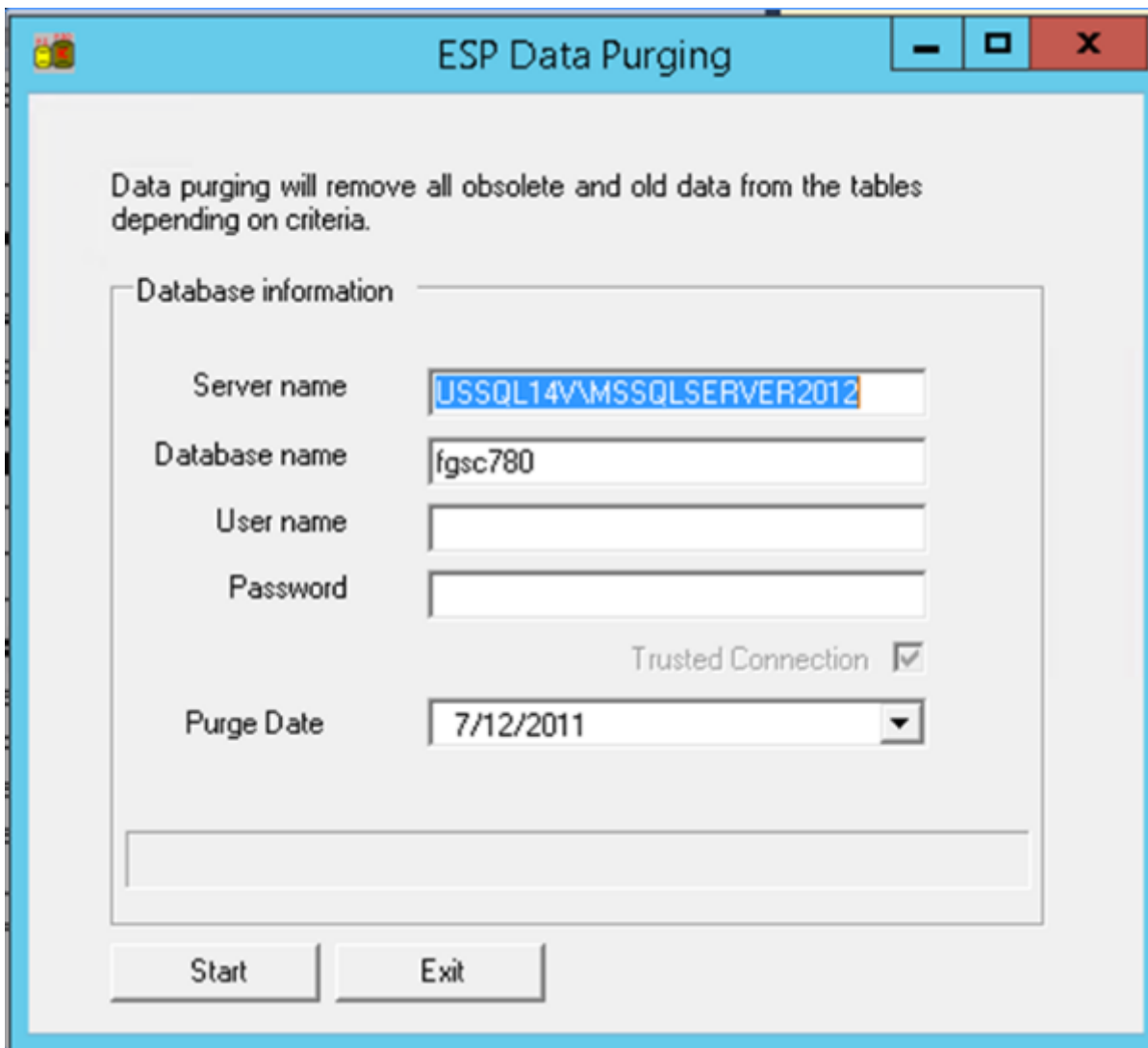
Option: 1 Will show you the available revisions to upgrade from for the revision you are trying to upgrade to if it fails, it returns database versions though, not msi versions.

(Deprecated) Espdatapurge:

This is now on a service setup.

Purge data in ESP before upgrading, it uses different datetime fields depending on the record, and depends on the statuses of some objects to determine if the transactional record is purged

NOTE: If a docket is older than your purge time, if it is in printed status, it will not purge



ESP Data Purging

Data purging will remove all obsolete and old data from the tables depending on criteria.

Database information

Server name: USSQL14V\MSSQLSERVER2012

Database name: fgsc780

User name:

Password:

Trusted Connection ☒

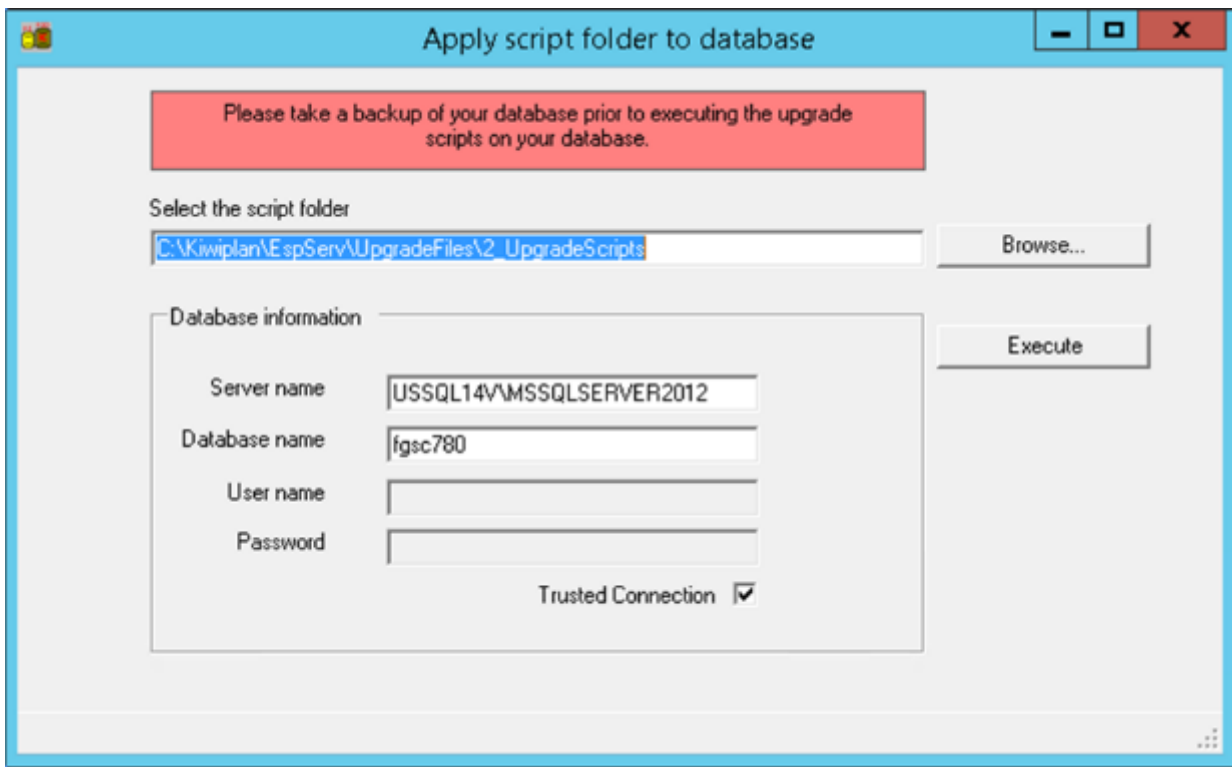
Purge Date: 7/12/2011

Start Exit

Upgrade Options Only

Applyscriptfolder:

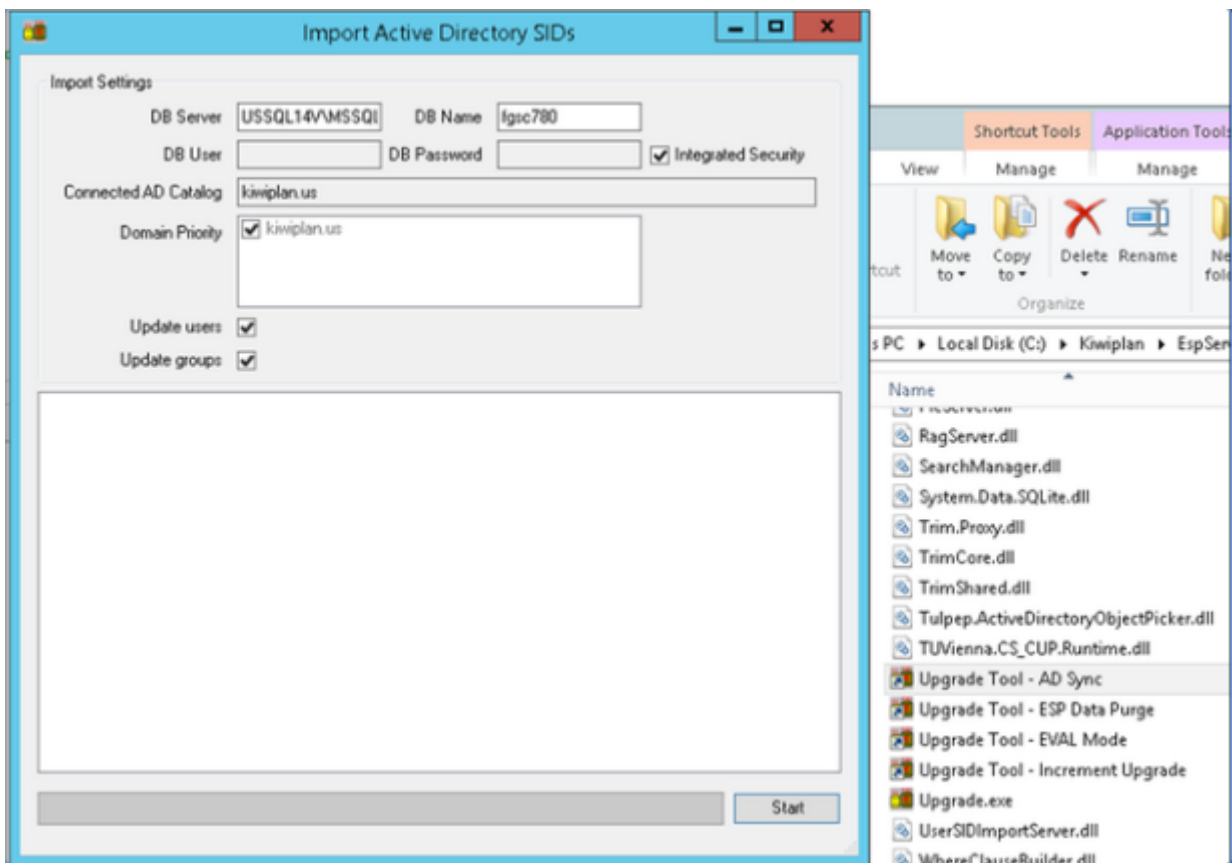
This is to point the upgrade to look at another script folder but will bypass version checking so you can break things. C:\Kiwiplan\EspServ\Upgrade.exe applyscriptfolder



Importactivedirectory:

This is to import and sync the Active Directory after the upgrade completes.

C:\Kiwiplan\EspServ\Upgrade.exe importactivedirectory



C:\Kiwiplan\EspServ\Upgrade.exe espdatapurge

C:\Kiwiplan\EspServ\Upgrade.exe evaluator:1

Revision #1

Created 2 September 2024 21:24:04 by Steve Ling

Updated 2 September 2024 21:27:21 by Steve Ling