

Kiwiplan - ULT Interface to Warehouse and Carriers

This is an interface that can be used to import loaded trucks at a remote location and also be able to ship them in ULT.

Reference

<https://kall.kiwiplan.co.nz/kall/kiwiplan/issueViewer.do?id=5447259>

Programs

imptruck

This program imports the jobs and units that would be on the remote load

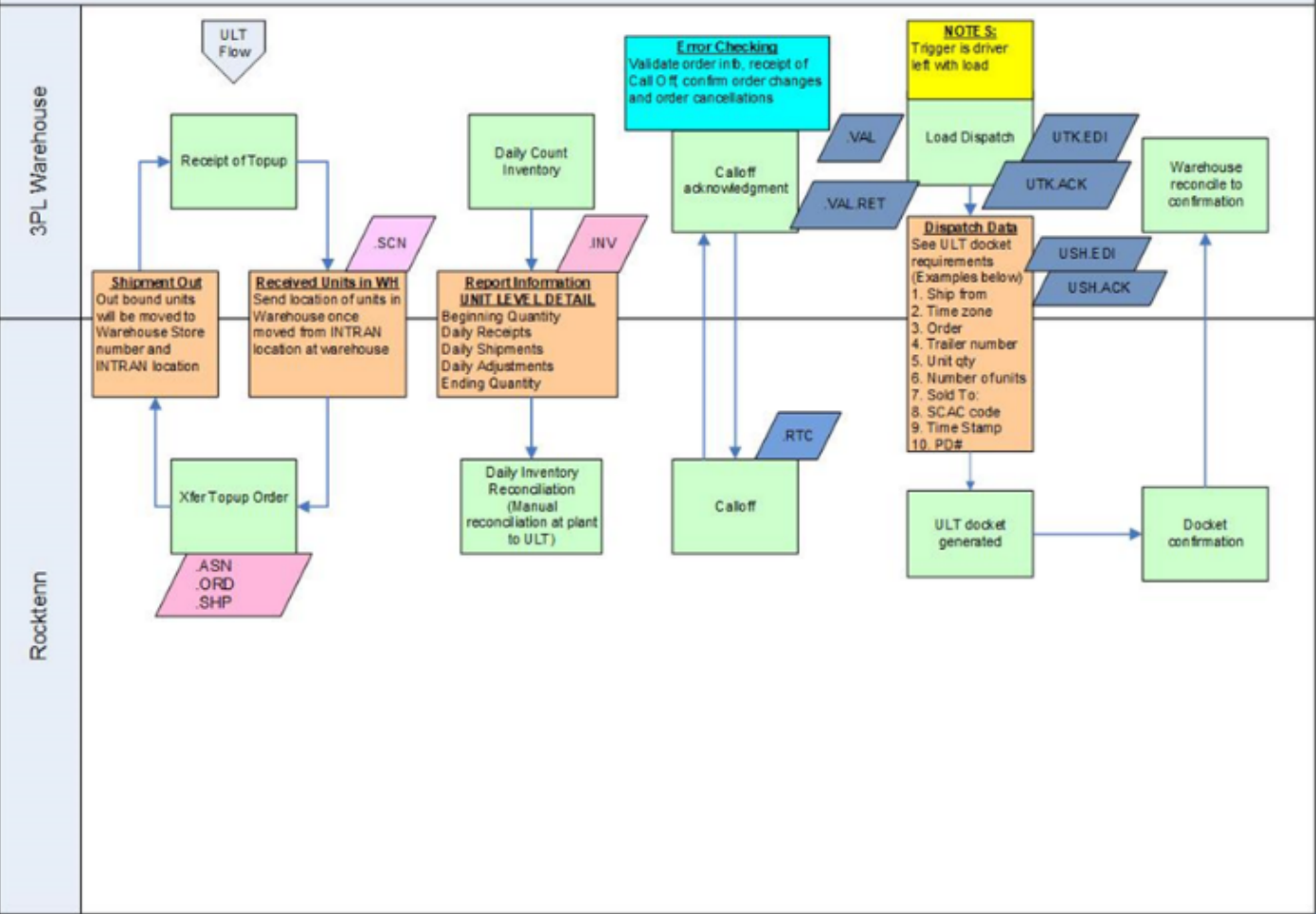
shptruck

This program ships the truck in ULT.

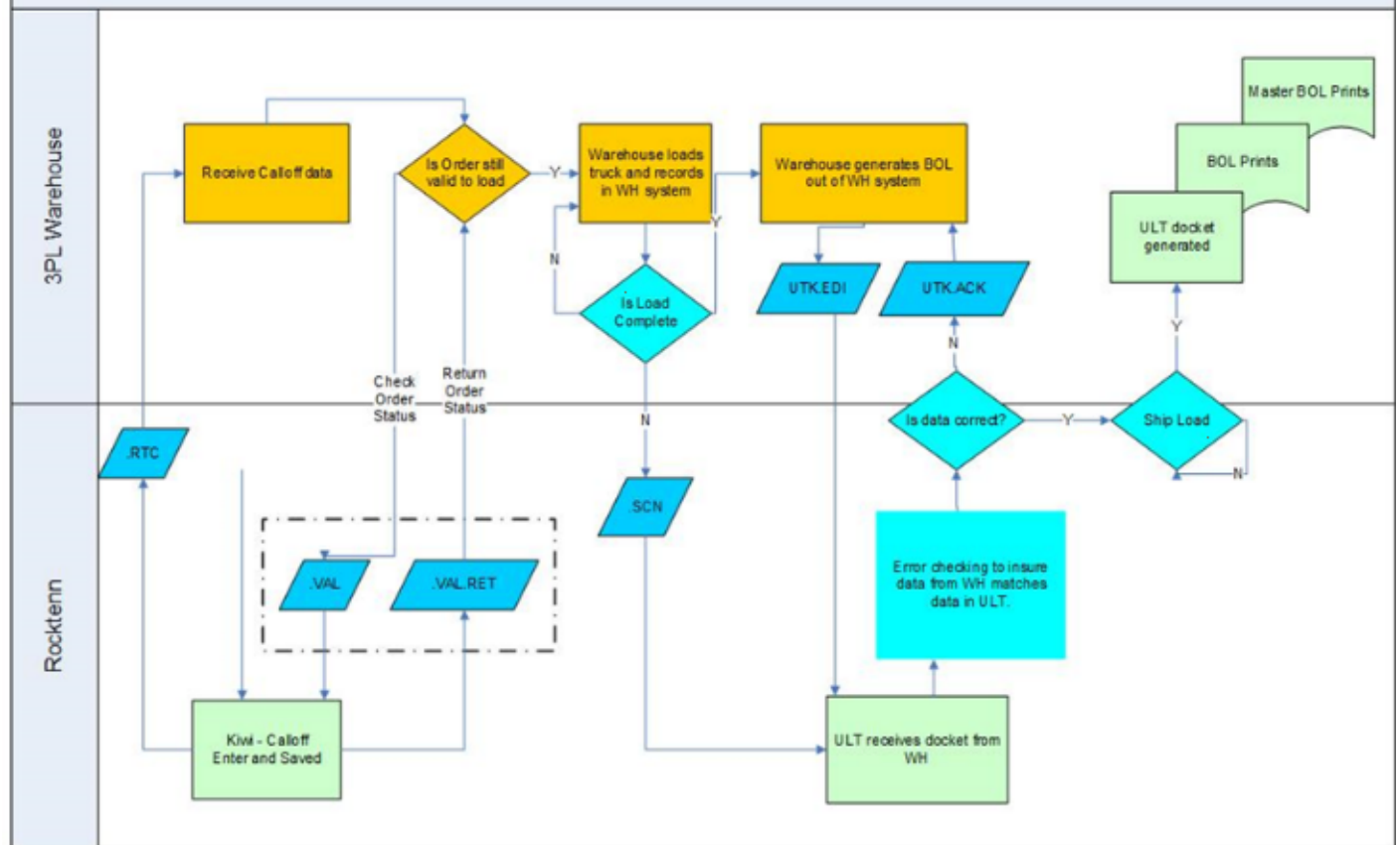
NOTE: You can also unship and undesptch via the interface to undo loads.

Example of an interface running in Canada

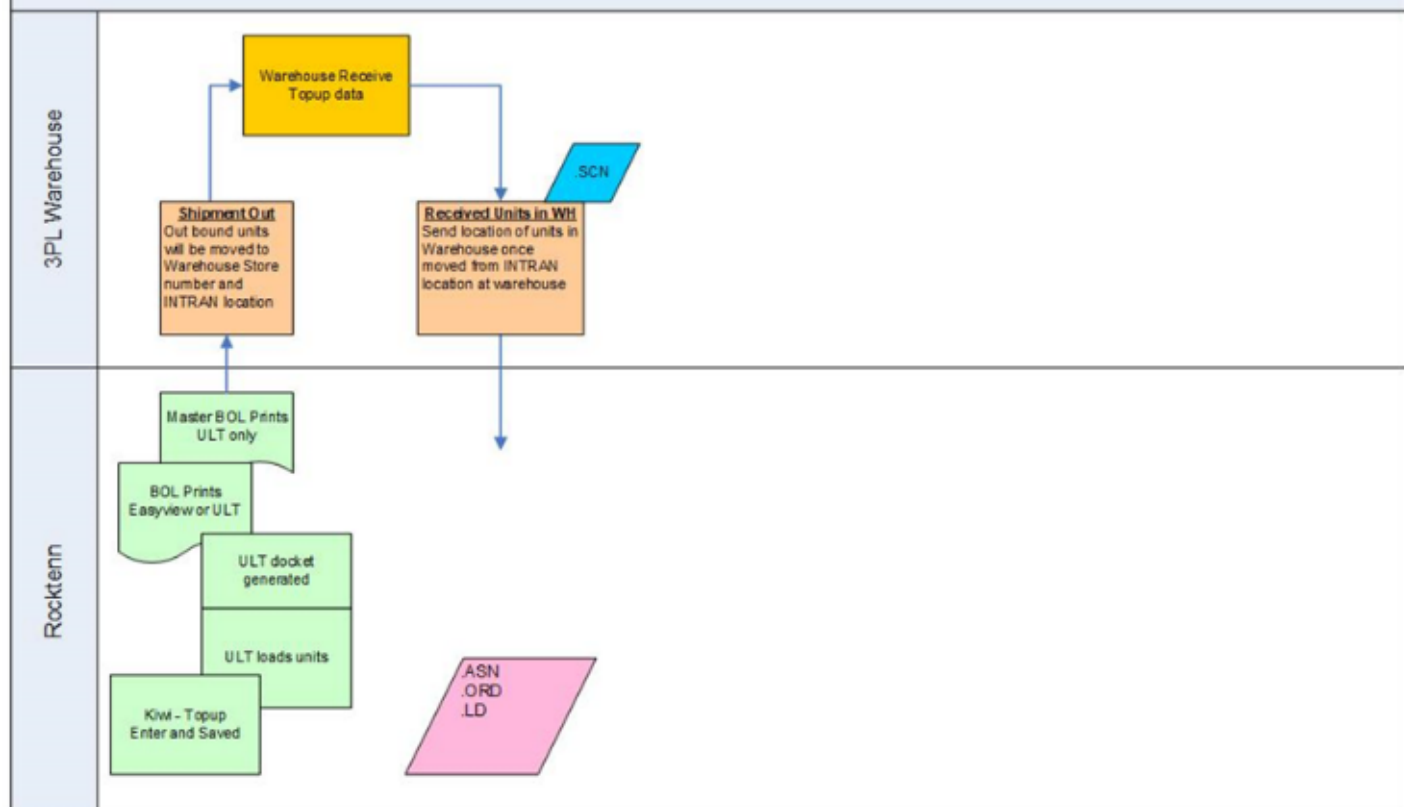
Warehouse Interface



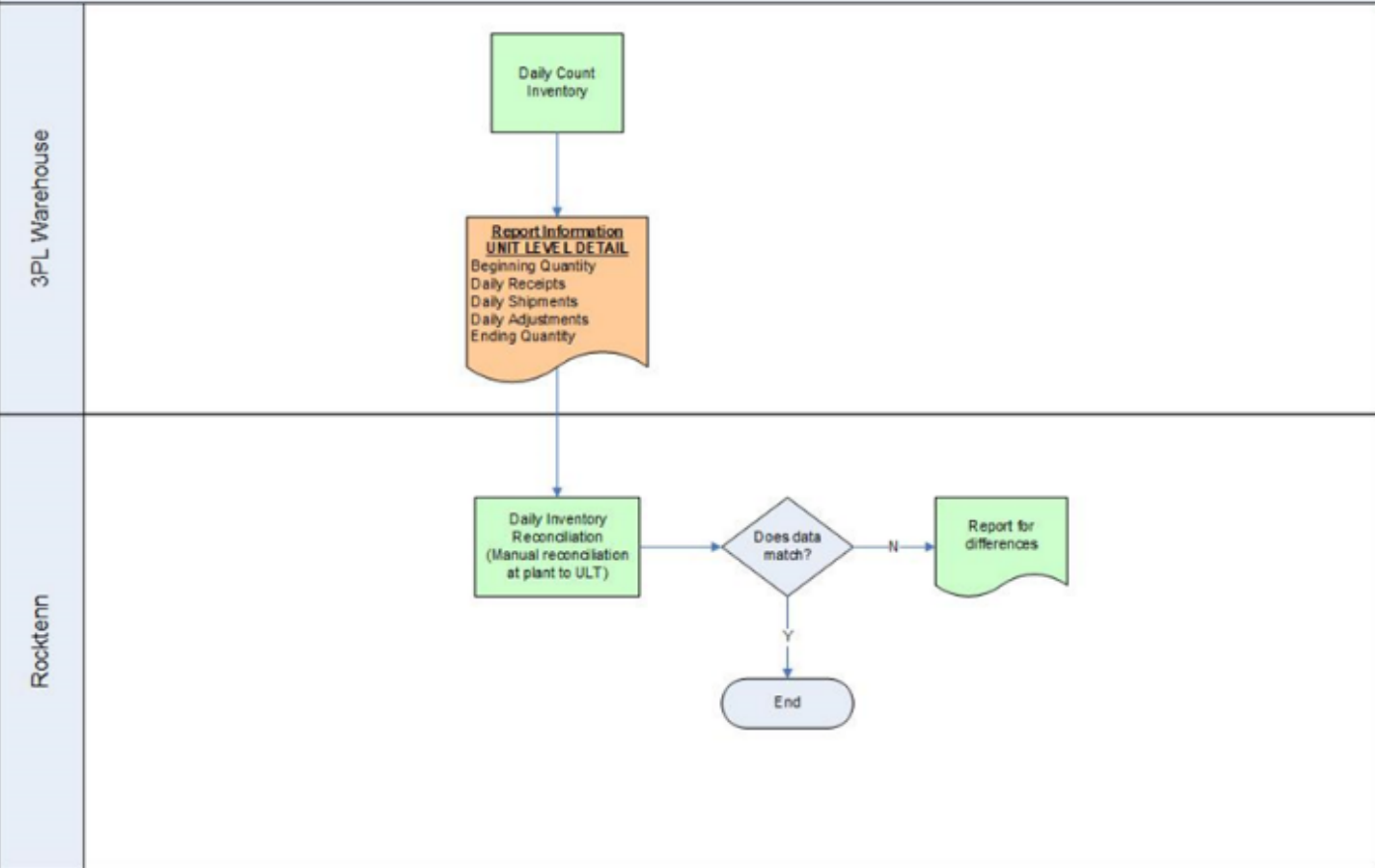
Bidirectional Generic Warehouse Calloff flow



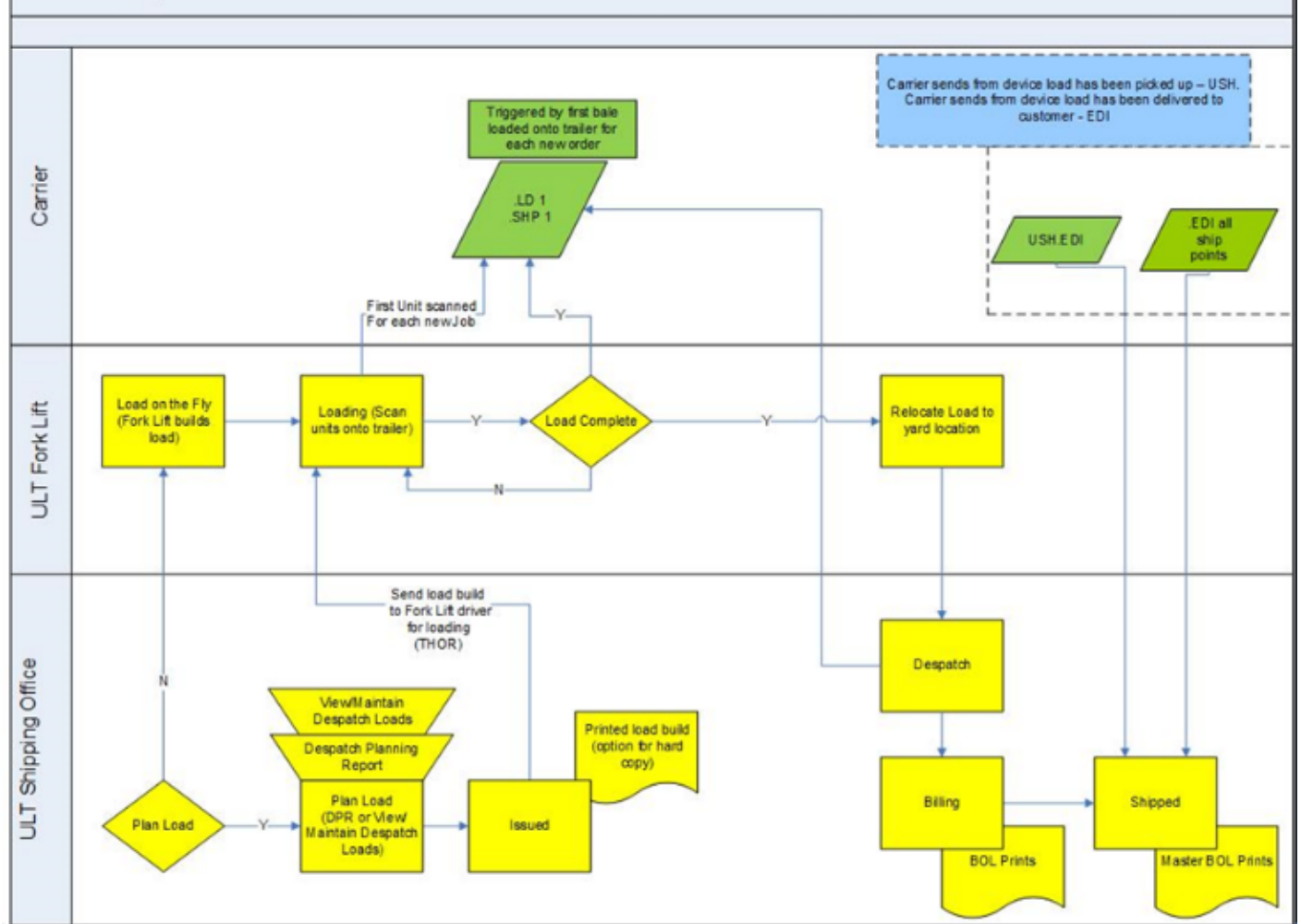
Bidirectional Generic Warehouse Topup flow



Bidirectional Generic Inventory Process



Make and Ship Interface to Carrier



Revision #1

Created 2 September 2024 21:47:54 by Steve Ling

Updated 2 September 2024 22:00:21 by Steve Ling