

Kiwiplan - ESP Stock Transfer

This is to be able to print out a stock transfer docket.

ULT Setup

Set the following MAP parameters to enable export of transfer data:

GEN/EE/Layout Version for ULTDLD (ULT Export) to 2

pcsmenu:AP MAINTAIN PARAMETERS 13/Sun 13:48

=====

=====

System	Description	V/M
GEN	General for many systems	
Prefix	Description	View_Mnt Default_key Many_records_allowed
EE	Electronic Data Export	M Y
Number	Parameter	Value
1	Data Type	ULTDLD
2	Description	Docket Export
3	Directory Name	/app01/kiwi/site_0068/work/ultdld/
4	Last File Number Used	3
5	Script name for File Export	EspRenameDkt
6	Fixed record length 0=variable	0
7	File Name (optional)	
8	Layout Version	2

INV/DL/Allow File Export (Y/N) to Y

kwutils:C MAINTAIN PARAMETERS 13/Sun 13:50

=====

=====

System	Description	V/M
INV	Inventory Management/Tracking	

Prefix	Description	View_Mnt	Default_key	Many_records_allowed
DL	Despatch Load Parameters	M	PARAMS	N
Number	Parameter	Value		
1	Key	PARAMS		
6	Allow File Export (Y/N)	Y		

INV/DL/Include in export transfer to Y

```

kwutils:C          MAINTAIN PARAMETERS          13/Sun 13:51
=====
=====

System Description          V/M
INV  Inventory Management/Tracking

Prefix Description          View_Mnt Default_key Many_records_allowed
DL   Despatch Load Parameters      M   PARAMS          N

Number Parameter          Value
35   Include in export transfer    Y

```

INV/DL/When set Load to "Shipped" Generate GLBOL export to Y

```

kwutils:C          MAINTAIN PARAMETERS          13/Sun 13:51
=====
=====

System Description          V/M
INV  Inventory Management/Tracking

Prefix Description          View_Mnt Default_key Many_records_allowed
DL   Despatch Load Parameters      M   PARAMS          N

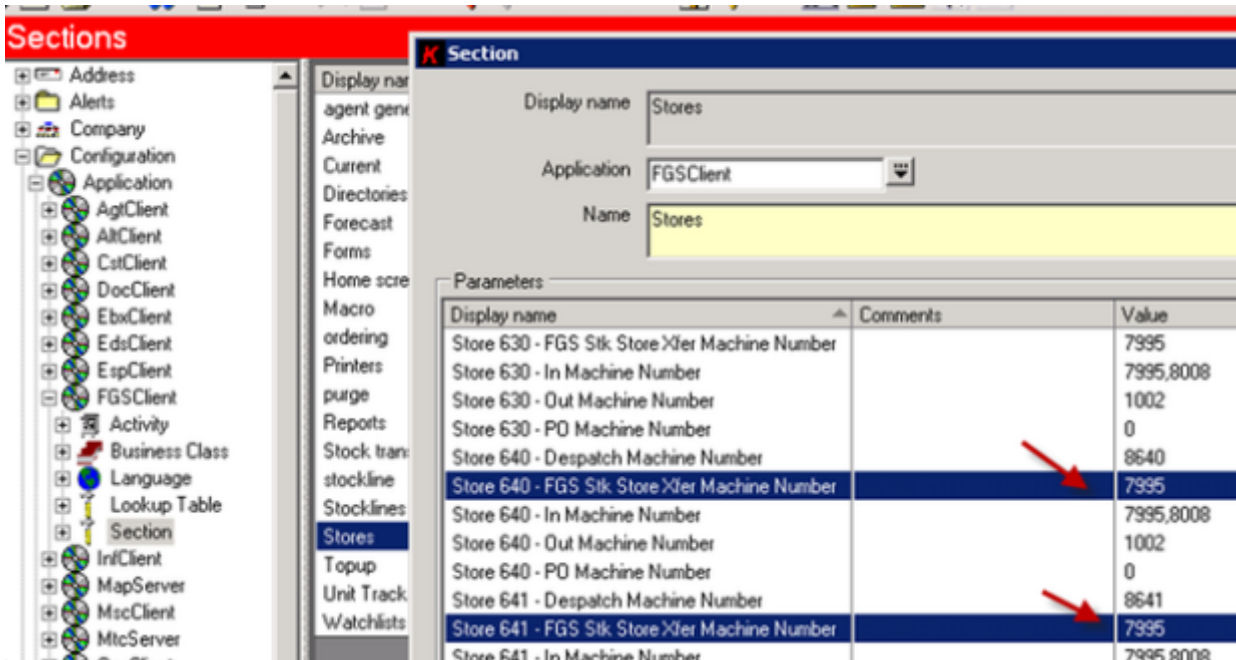
Number Parameter          Value
33   When set Load to "Shipped"

34   Generate DLBOL export        Y

```

ESP Setup

Ensure your FGS/Stores parameters in ESP are set correctly, in particular FGS/Stores/Store x - FGS stk store xfer machine number for each store you are transferring to and from.



Verify you store locations and added highlighted (FGS Stk Store, In Machine & Out Machine)

invmenu:C

Select Store

13/Sun 14:18

=====

=====

Total Stores = 14

Idx	Store Description	1_L	Plant	Items	Off	Address Line 1
5	80 WINSTON-SALEM MAIN FG STO	N	1	0	8080 N. Point Blvd	
6	81 Westpoint Warehouse	N	1	0	3946 Westpoint Blvd	
7	124 Reynolds Packaging	N	1	0	2249 Virginia Ave	
8	125 Richmond Corrugated	N	1	0	5301 Corrugated Rd	
9	126 Carolina Container	N	1	0	5701 Quality Way	
10	127 South Atlantic	N	1	0	3932 Westpoint Blvd	
11	128 Phoenix Packaging	N	1	0	125 E. 9th St.	
12	129 Driscoll Group	N	1	0	1084 W. 4th St.	
13	130 RKT Latta	N	1	0	4461 Hwy 301 S	
14	143 Freeman Container	N	1	0	121 Freeman Park Drive	

You must add the FROM and TO store number of the stores that will be used in the transfers in the despatchmode lookup table.

Once the store numbers are in the despatchmode lookup table then you must go to the relative address. To do this SEARCH→Address→Store Number and enter the store number for the FROM and also on the TO and set the drop down for the despatchmode.

FROM

Lewisburg Container

Name	<input type="text" value=""/>	No:	001
Company	RockTenn - Lewisburg Container 99439100		
Details		Notification	
Street	<input type="text" value="7000"/>	Phone	<input type="text" value=""/>
City	<input type="text" value=""/>	Fax	<input type="text" value=""/>
State	Tennessee	Email	<input type="text" value=""/>
Country	USA	CS Rep	<input type="text" value=""/>
Zipcode	37091	Sales Person	<input type="text" value=""/>
<div>Grids Shipping Instructions General Custom Fields Other Charges</div>			
Rec.Hrs from	08:00	Despatch mode	- COMMON CARRIER
Rec.Hrs to	17:00	Destination code	640
Warning hours		Shipping notification	None

TO

Name	<input type="text" value="Tri State Whse"/>	No:	296
Company	RockTenn - Corp 0		
Details		Notification	
Street	<input type="text" value="1020 Urbane Rd"/>	Phone	<input type="text" value=""/>
City	<input type="text" value="Cleveland"/>	Fax	<input type="text" value=""/>
State	Tennessee	Email	<input type="text" value=""/>
Country	USA	CS Rep	<input type="text" value=""/>
Zipcode	37312	Sales Person	<input type="text" value=""/>
<div>Grids Shipping Instructions General Custom Fields Other Charges</div>			
Rec.Hrs from		Despatch mode	- COMMON CARRIER
Rec.Hrs to		Destination code	642
Warning hours		Shipping notification	None

Revision #1

Created 2 September 2024 22:00:46 by Steve Ling

Updated 2 September 2024 22:03:49 by Steve Ling